



# GAT MONTHLY MEMBERSHIP PROGRESS REPORT

Results as of: 10/31/2021

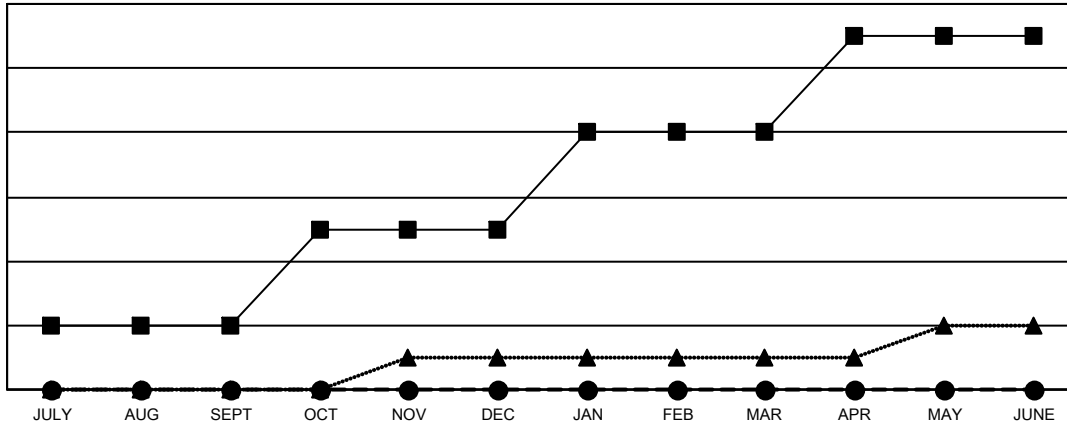
Multiple District 31

LOCATION: NORTH CAROLINA

Clubs			
RESULTS FOR 2021-2022			
QUARTER	NEW CLUB GOAL	NEW CLUBS	DROPPED CLUBS
JULY/AUG/SEPT	2	0	4
OCT/NOV/DEC	3	0	0
JAN/FEB/MAR	3	0	0
APR/MAY/JUNE	3	0	0

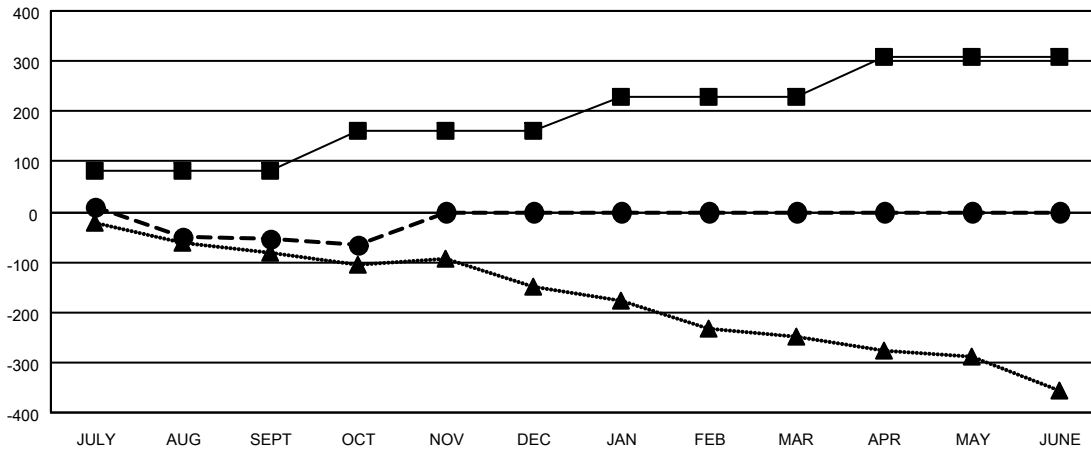
Members			
RESULTS FOR 2021-2022			
QUARTER	MEMBER GROWTH NET GOAL	MEMBER GROWTH ACTUAL	DROPPED MEMBERS ACTUAL (including transfers)
JULY/AUG/SEPT	82	130	171
OCT/NOV/DEC	80	67	40
JAN/FEB/MAR	67	0	0
APR/MAY/JUNE	80	0	0

GOALS AND ACTUAL NEW CLUBS CUMULATIVE



- CURRENT YEAR GOALS FOR NEW CLUBS
- CURRENT YEAR ACTUAL NEW CLUBS
- ▲- LAST YEAR ACTUAL NEW CLUBS

GOALS AND ACTUAL MEMBERS CUMULATIVE



- MEMBER GROWTH NET GOAL
- MEMBER GROWTH ACTUAL
- ▲- LAST YEAR MEMBERSHIP ACTUAL

<b>DROPPED CLUBS: 4</b>	67 CLUBS OF 263 ADDED 1 OR MORE NEW MEMBERS	<b>GENDER DISTRIBUTION</b>
<b>DROPPED MEMBERS</b>	<a href="#">CLICK HERE FOR CUMULATIVE MEMBERSHIP DATA</a>	MALE 3,324 (67.37%)
DECEASED 38		FEMALE 1,610 (32.63%)
CLUB CANCELLED 67		NON BINARY 0 (0.00%)
OTHER 106		PREFER NOT TO ANSWER 0 (0.00%)
<b>TOTAL 211</b>		<b>TOTAL FAMILY UNIT MEMBERS 1,123</b>
		FAMILY MEMBERS PAYING HALF DUES 577